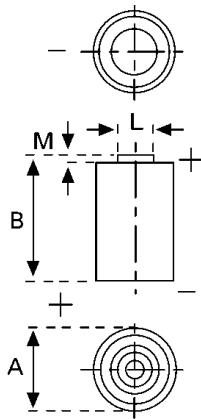


Data Sheet


Type Number	6205
Designation IEC	CR 17345
System	Li-Manganese dioxide / Organic Electrolyte
UL Recognition	MH 13654
Nominal Voltage	3 V
Typical Capacity C	1450 mAh
Current 20 mA, at 20°C down to 2,0 V	
Weight (approx.)	17 g
Volume	7 ccm
Coding	Date of Manufacturing Month / Year
Temperature Ranges	min. max.
Storage	-20°C 45°C
Discharge	-40°C 70°C*
Dimensions	min. max.
Diameter (A)	16,20 16,80
Height (B)	33,50 34,50
Shoulder Diameter [L]	6,00 6,60
Shoulder Height [M]	1,00 1,50

Typical Capacities (at 20°C)

Discharge Type	Discharge Current	End Voltage:	2,0 V
Continuous 24h/d,7d/w	20 mA	Capacity [mAh]:	1450

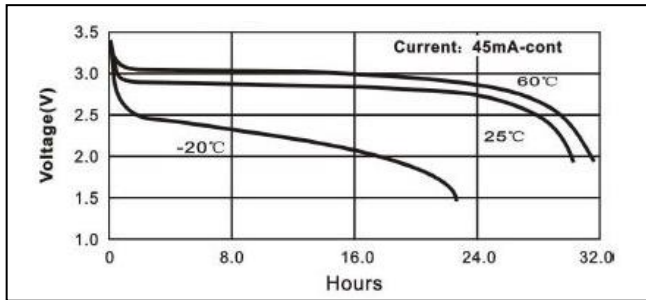
* Contact VARTA if the application is intended to be outside the range of -20°C to +60°C.

*Information and contents in this data sheet are for reference purpose only.
They do not constitute any warranty or representation and are subject to change without notice.
For most current information and further details, please contact your VARTA representative.*

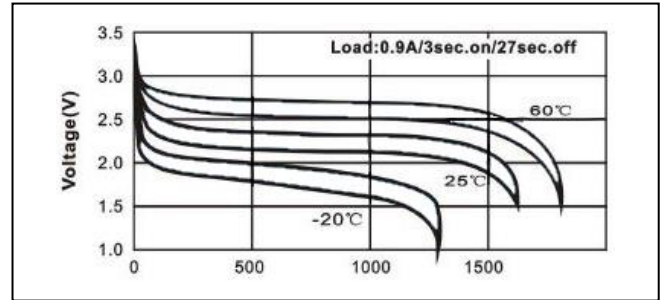
Data Sheet

Performance Data:

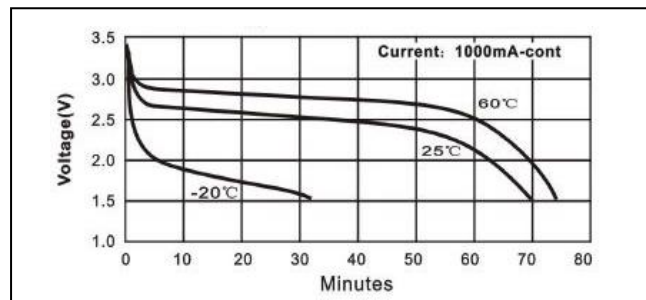
• **Temperature Characteristics**



• **Pulse discharge characteristics**



• **Discharge Characteristics**

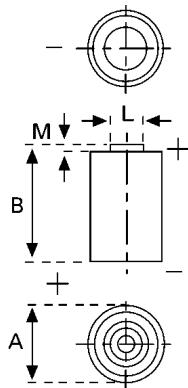


- Self-discharge rate < 1%/Y at room temperature
- Storage life > 10 years
- Operating life* > 10 years

* depending on environmental condition and energy consumption

*Information and contents in this data sheet are for reference purpose only.
They do not constitute any warranty or representation and are subject to change without notice.
For most current information and further details, please contact your VARTA representative.*

Data Sheet



Type Number 6206
Designation IEC CR 15H270
System Li-Manganese dioxide / Organic Electrolyte

UL Recognition MH 13654
Nominal Voltage 3 V
Typical Capacity C 850 mAh
 Current 20 mA, at 20°C down to 2,0 V

Weight (approx.) 11 g
Volume 5,2 ccm

Temperature Ranges

	min.	max.
Storage	-20°C	45°C
Discharge	-40°C	70°C*

Dimensions

	min.	max.
Diameter (A)	15,0	15,5
Height (B)	26,7	27,3
Shoulder Diameter [L]	6,0	6,6
Shoulder Height [M]	0,8	1,8

Typical Capacities (at 20°C)

Discharge Type	Discharge Current	End Voltage:	2,0 V
Continuous 24h/d,7d/w	20 mA	Capacity [mAh]:	850

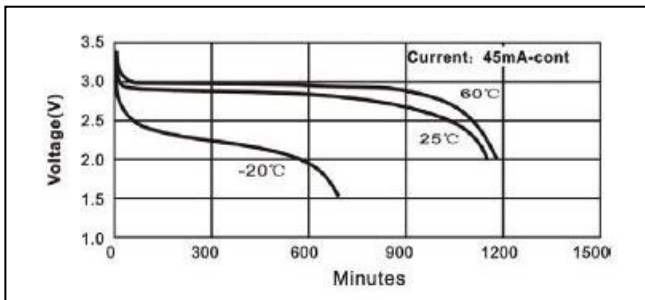
* Contact VARTA if the application is intended to be outside the range of -20°C to +60°C.

*Information and contents in this data sheet are for reference purpose only.
 They do not constitute any warranty or representation and are subject to change without notice.
 For most current information and further details, please contact your VARTA representative.*

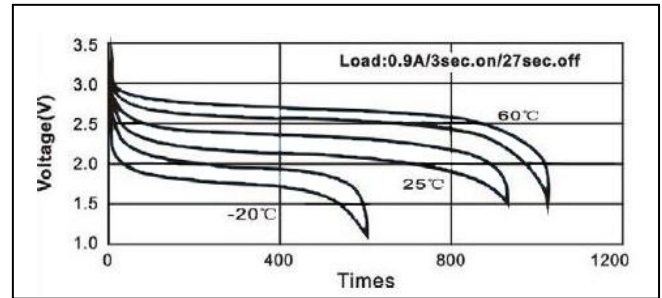
Data Sheet

Performance Data:

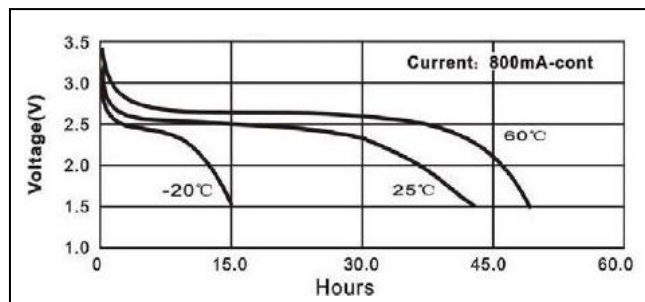
- Temperature Characteristics



- Pulse discharge characteristics



- Discharge Characteristics



- Self-discharge rate < 1%/Y at room temperature
- Storage life > 10 years
- Operating life* > 10 years

* depending on environmental condition and energy consumption

*Information and contents in this data sheet are for reference purpose only.
They do not constitute any warranty or representation and are subject to change without notice.
For most current information and further details, please contact your VARTA representative.*

Data Sheet



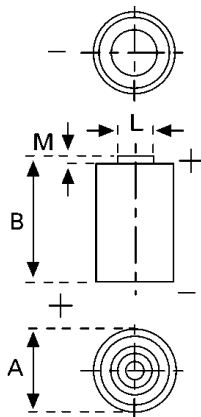
Type Number 6205
Designation IEC CR 17345
System Li-Manganese dioxide / Organic Electrolyte

UL Recognition MH 13654
Nominal Voltage 3 V
Typical Capacity C 1450 mAh
 Current 20 mA, at 20°C down to 2,0 V

Weight (approx.) 17 g
Volume 7 ccm
Coding Date of Manufacturing Month / Year

Temperature Ranges

	min.	max.
Storage	-20°C	45°C
Discharge	-40°C	70°C*



Dimensions

	min.	max.
Diameter (A)	16,20	16,80
Height (B)	33,50	34,50
Shoulder Diameter [L]	6,00	6,60
Shoulder Height [M]	1,00	1,50

Typical Capacities (at 20°C)

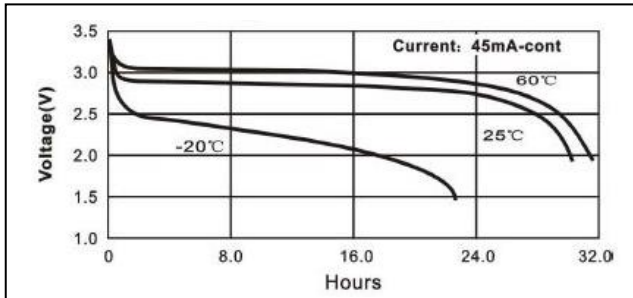
Discharge Type	Discharge Current	End Voltage:	2,0 V
Continuous 24h/d,7d/w	20 mA	Capacity [mAh]:	1450

* Contact VARTA if the application is intended to be outside the range of -20°C to +60°C.

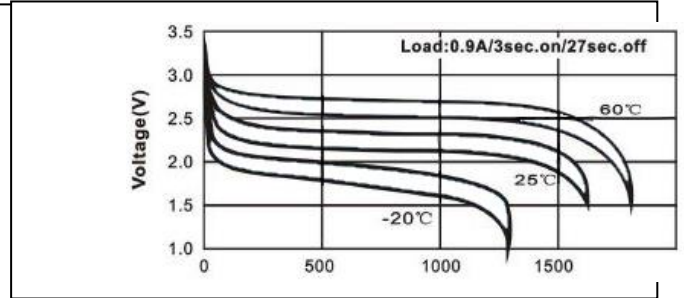
Data Sheet

Performance Data:

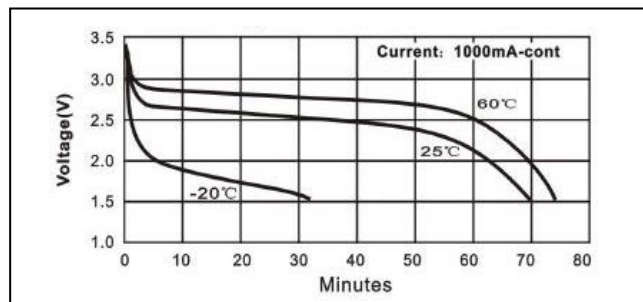
- **Temperature Characteristics**



- **Pulse discharge characteristics**



- **Discharge Characteristics**



- Self-discharge rate < 1%/Y at room temperature
- Storage life > 10 years
- Operating life* > 10 years

* depending on environmental condition and energy consumption

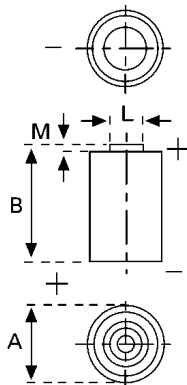
Data Sheet



Type Number 6206
Designation IEC CR 15H270
System Li-Manganese dioxide / Organic Electrolyte

UL Recognition MH 13654
Nominal Voltage 3 V
Typical Capacity C 850 mAh
 Current 20 mA, at 20°C down to 2,0 V

Weight (approx.) 11 g
Volume 5,2 ccm



Temperature Ranges

	min.	max.
Storage	-20°C	45°C
Discharge	-40°C	70°C*

Dimensions

	min.	max.
Diameter (A)	15,0	15,5
Height (B)	26,7	27,3
Shoulder Diameter [L]	6,0	6,6
Shoulder Height [M]	0,8	1,8

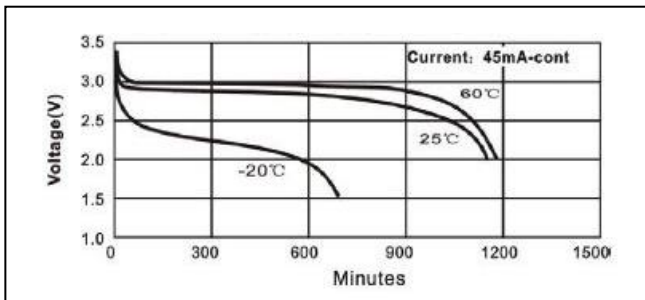
Typical Capacities (at 20°C)

Discharge Type	Discharge Current	End Voltage:	2,0 V
Continuous 24h/d,7d/w	20 mA	Capacity [mAh]:	850

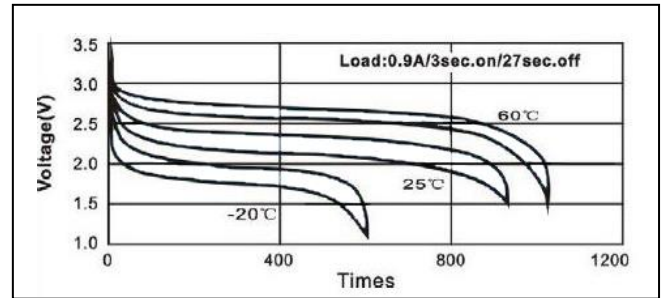
* Contact VARTA if the application is intended to be outside the range of -20°C to +60°C.

Performance Data:

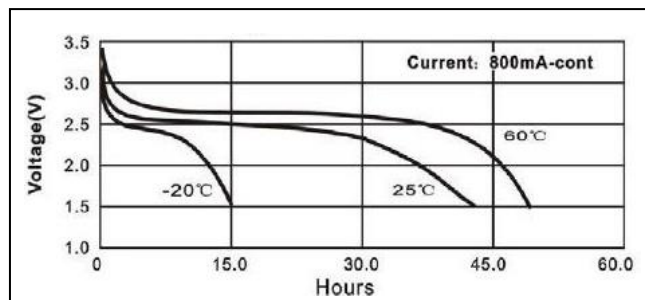
- **Temperature Characteristics**



- **Pulse discharge characteristics**



- **Discharge Characteristics**



- Self-discharge rate < 1%/Y at room temperature
- Storage life > 10 years
- Operating life* > 10 years

* depending on environmental condition and energy consumption